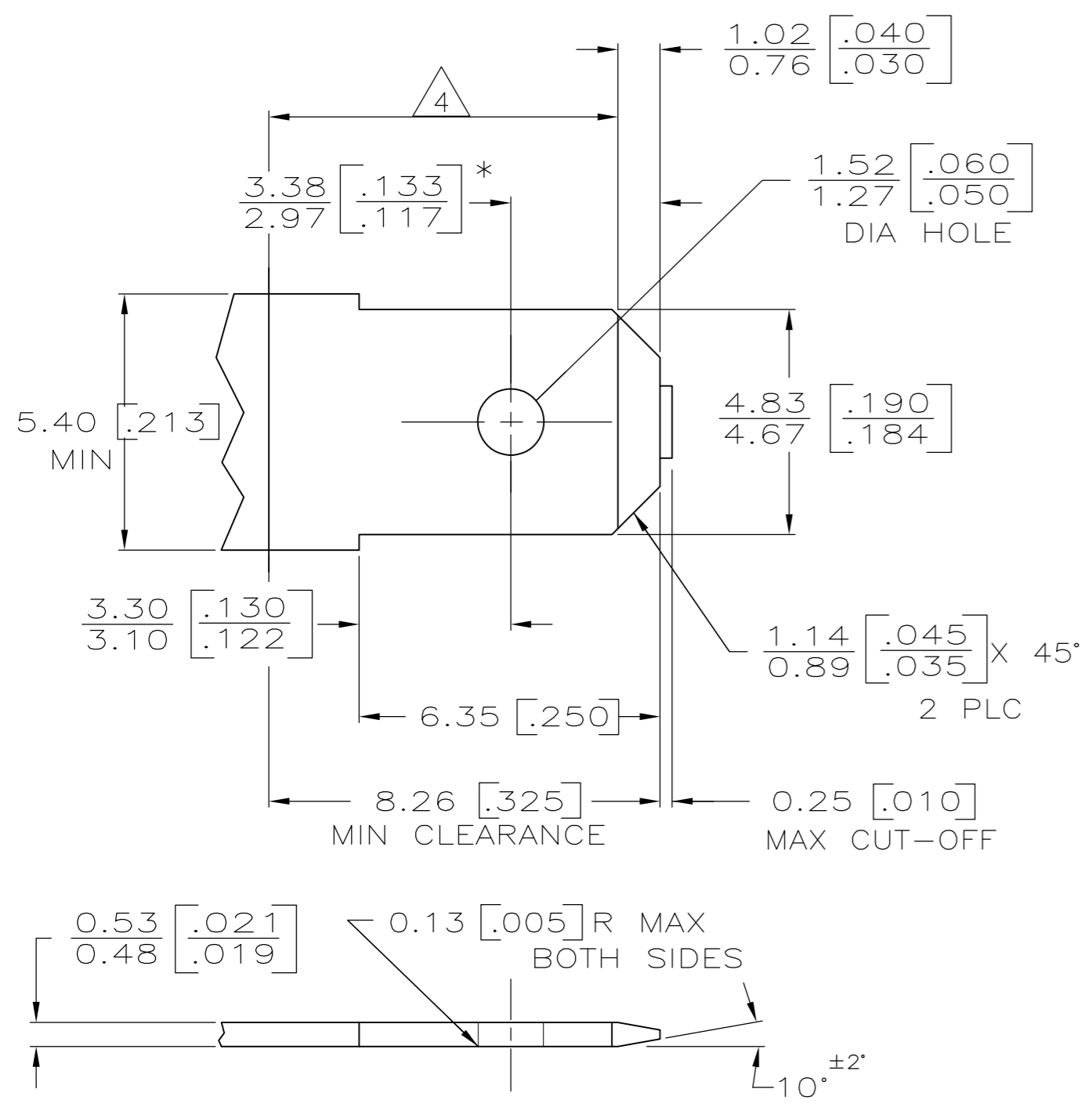


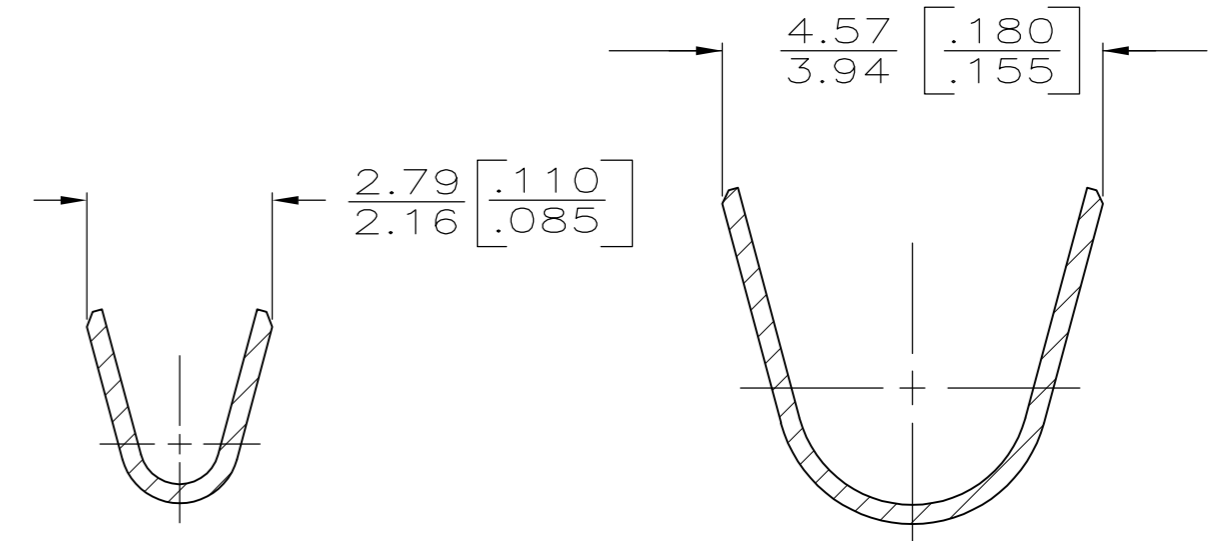
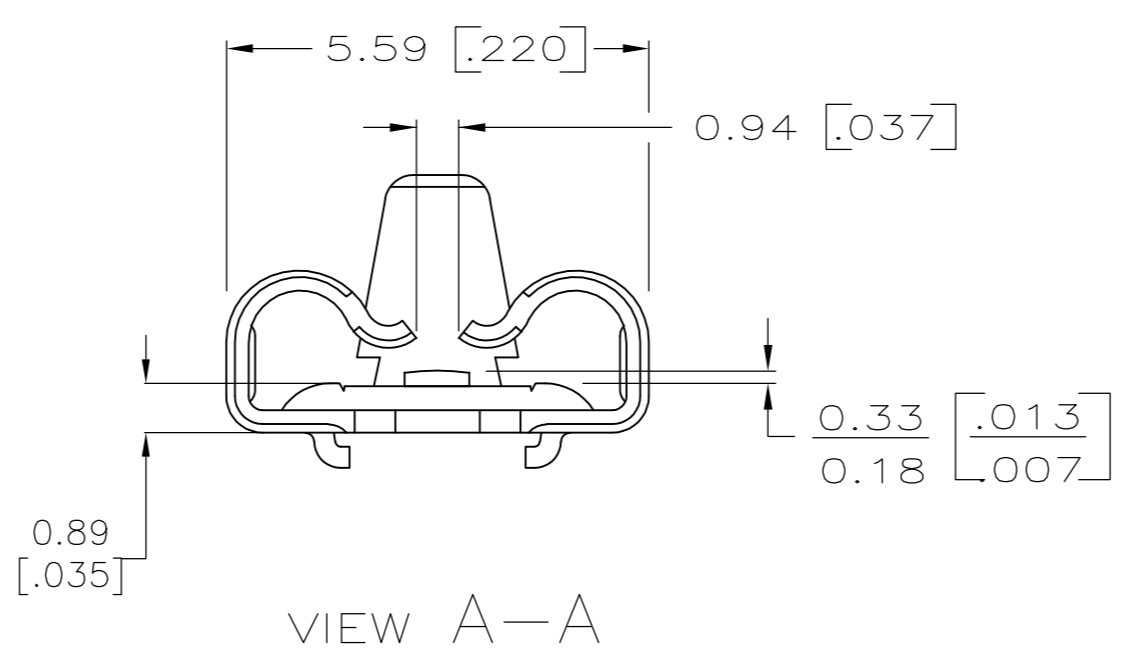
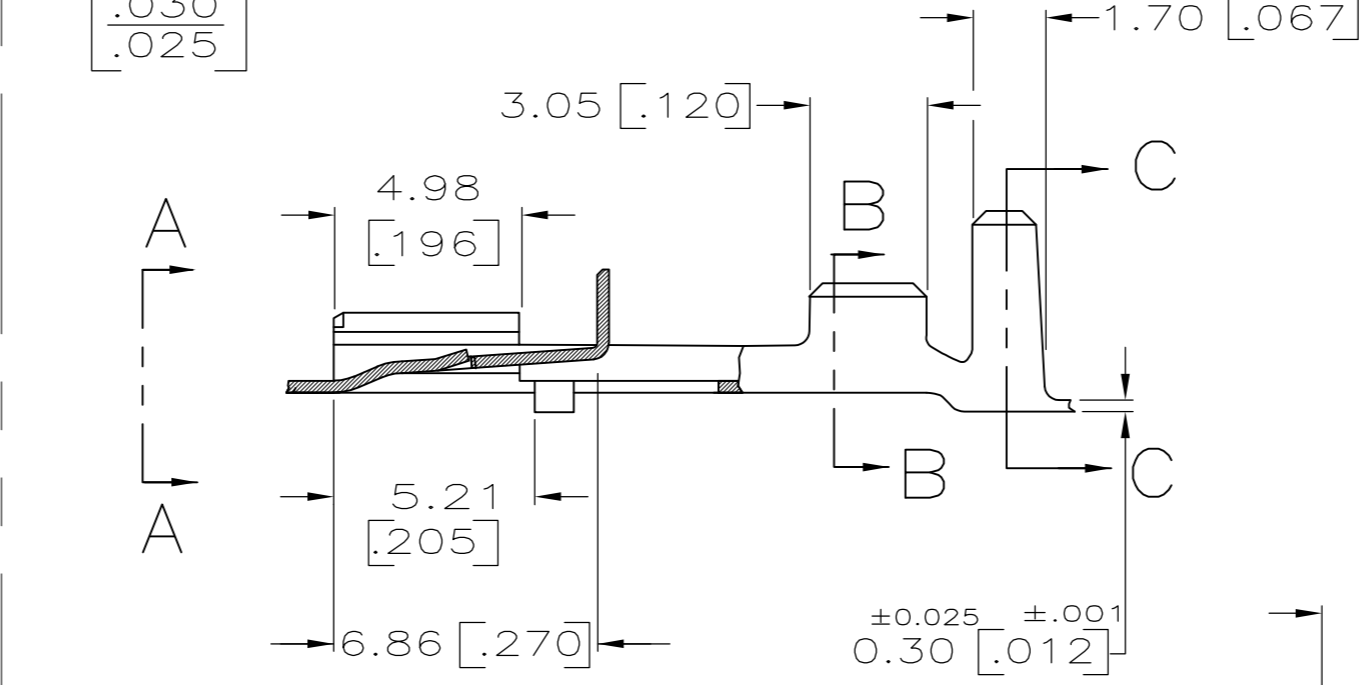
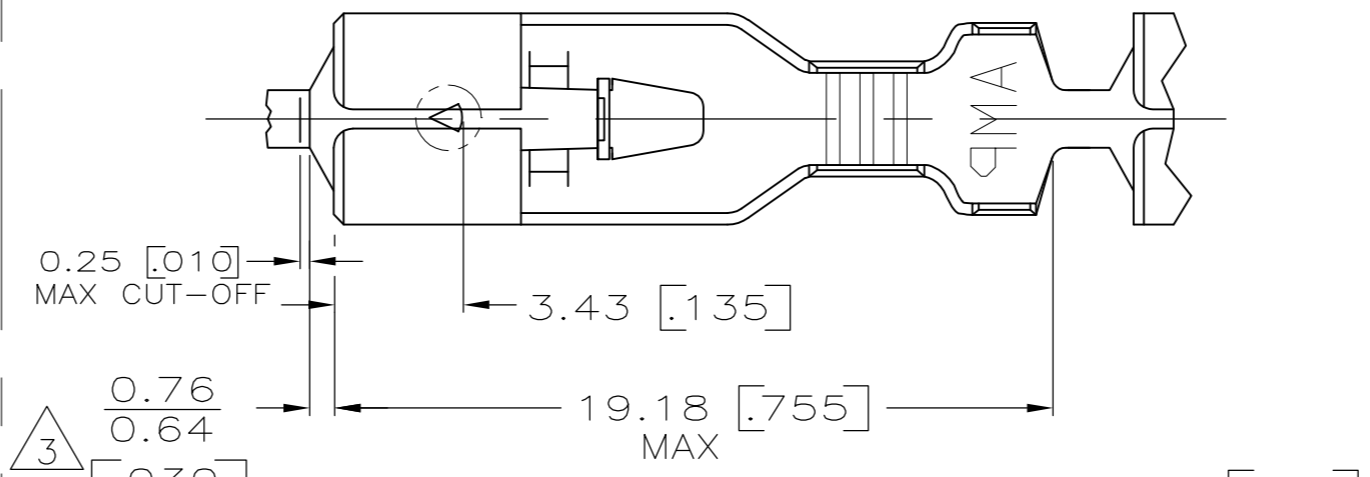
THIS DRAWING IS UNPUBLISHED. RELEASED FOR PUBLICATION
 © COPYRIGHT - By - ALL RIGHTS RESERVED.

LOC		DIST		REVISIONS			
P	LTR	DESCRIPTION		DATE	DWN	APVD	
AF	50	J5		REVISED PER ECR-12-013486	06JAN13	KH	KR

SUGGESTED MATING TAB



- 1 MATL: #2 HARD BRASS OR NICKEL PLATE STEEL.
- 2 NO BURRS PERMISSIBLE AT HOLE.
- 3 TIN PLATING IS REQUIRED ON BRASS WHEN TERMINAL TEMPURTURE IS OVER 225° F.
- 4 MUST BE FLAT WITHIN 0.076 [0.003] OVER THIS LENGTH.
- 5 HOLE MUST BE SYMMETRICAL ABOUT TAB ϕ WITHIN 0.076 [0.003]
- * TO BE USED ONLY WHEN SHOULDER IS ELIMINATED.



- 1 DIMENSIONS IN BRACKETS ARE IN INCHES.
- 2 CONTINUOUS STRIP ON REELS.
- 3 THE 0.76 [0.030] / 0.64 [0.025] DIMENSION MUST BE MAINTAINED BY THE APPLICATOR CUT-OFF TO ENSURE THE PROPER LOCKING FUNCTION OF THE RECEPTACLE.
- 4 WIRE SIZE IS FOR A [#24-#20] AWG.
- 5 INSULATION RANGE IS 1.52-2.79 [0.060-.110] DIA.
- 6 GOLD PLATE 0.00127 [0.000050] MIN THK OVER 0.00127 [0.000050] MIN NICKEL PL.
- 7 GOLD FLASH PL. 0.00012 [0.000005] MIN THK OVER 0.00127 [0.000050] MIN NICKEL PL
- 8 PRELIMINARY - NOT FOR PRODUCTION

FINISH	MATERIAL	PART NO.
GOLD / NICKEL 7	BRASS	63196-5
---	BRASS	63196-4
GOLD / NICKEL 6	BRASS	63196-3
PRE-TIN	BRASS	63196-2
TIN	BRASS	63196-1

THIS DRAWING IS A CONTROLLED DOCUMENT.

DIMENSIONS: mm [INCHES]	TOLERANCES UNLESS OTHERWISE SPECIFIED:	DWN: JR RUTH 2/28/87	
	0 PLC ± -	CHK: G YETTER 3/9/87	
	1 PLC ± -	APVD: R KUZO 3/9/87	
	2 PLC ± -	PRODUCT SPEC	
MATERIAL: SEE TABLE	FINISH: SEE TABLE	APPLICATION SPEC: -	NAME: RECEPTACLE, POSITIVE LOCK, .187 SERIES
		WEIGHT: -	SIZE: A2
		CUSTOMER DRAWING	CAGE CODE: 00779
			DRAWING NO: 63196
			RESTRICTED TO: -
			SCALE: 5:1
			SHEET: 1 OF 1
			REV: J5